



- Paper Shredders
- Spiral Binding Machines
- Laminating Machines
- Note Counting Machines



[www.targetofficesystems.com](http://www.targetofficesystems.com)  
[info@targetofficesystems.com](mailto:info@targetofficesystems.com)

# HIGH SECURITY PAPER SHREDDERS

No hassle, Easy operation - Advanced jam defense, Home and office use

## TG-36S (6 SHEETS)

Sheets ----- 6

Shred Type	Strip cut
Shred size(mm)	6 mm Particles
Shredding capacity(80 gsm)	6 Sheets
Shreds	Paper
Cutting speed	3.5m/min
Throat Width (mm)	220 mm
Basket Capacity	7 litres
Noise Level (dB)	Approx 72dB
Unit Dimension (mm)	314x134x265 (WxDxH)
Unit Weight (kgs)	1.29 kgs



**Strip Cut**



## TG-167CD (7 Sheets)

Sheets ----- 7

CD ----- 1

Credit Card ---1



**Cross Cut**

Shred Type	Cross cut
Shred size(mm)	4x45 mm Particles
Shredding capacity(80 gsm)	7 sheets
Shreds	Paper/CD/credit card
Cutting speed	2.30 m/min
Throat Width (mm)	220 mm
Basket Capacity	15 liters
Noise Level (dB)	74 dB
Unit Dimension (mm)	335x180x392 (WxDxH)
Unit Weight (kgs)	3.85 kgs

# HEAVY DUTY PAPER SHREDDERS

## TG-212 (12 SHEETS)

Sheets -----12  
 Credit Card --1



Shred Type	Cross cut
Shred size(mm)	5x45mm Particles
Shredding capacity(80 gsm)	12 sheets
Shreds Media	Paper / Credit Card
Cutting speed	1.6 m/min
Basket Capacity	21 Liter, Pull Out
Noise Level (dB)	72 dB
Unit Dimension (mm)	327x156x305
Unit Weight (kgs)	4.6 kgs

## TG-215CD (15 SHEETS)

Sheets -----15  
 CD -----1  
 Credit Card ---1



Shred Type	Cross cut
Shred size(mm)	4 x 38mm
Shredding capacity(80 gsm)	15 sheets
Shreds	Paper/CD/Credit card
Cutting speed	1.8 m/min
Throat Width (mm)	225 mm
Basket Capacity	30L, Pull-Out
Noise Level (dB)	58 dB
Unit Dimension (mm)	373 x 277 x 645 (WxDxH)
Unit Weight (kgs)	8.9 kgs



# HEAVY DUTY PAPER SHREDDERS

## TG-150X

8 Sheets ----- Manual Feed  
 150 Sheets ----- Auto Feed  
 Credit Card ----- 1



**150** A4 sheets paper  
**ONE TIME**

**MICRO CUT**

Shred Type	Micro Cut
Shred Size	4 x 10mm
Shredding Capacity (80gm)	150 Sheets Auto Shred/ 8 Sheets Manual Shreds
Shreds	Paper, Credit Card(manual shred only)
Cutting Speed	2.3m/min. auto shred, 1.7m/min. manual shred
Basket Capacity	21L pull-out
Noise Level	62db
Unit Dimension	358 x 235 x 570mm
Unit Net Weight	8.9kg
Unit Gross Weight	10.5kg
DIN level	P4
Max. Run time	50 min. auto shred, 5 min. manual shred
Cool down time	60 min.
Jam protection	Yes
Auto Jam Clearance	Yes
Bin Full Indicator	Yes(Yellow light)
Bin Out Indicator	Yes(Yellow light flashing)
Overheat Indicator	Yes(Red light)
Overload Indicator	Yes(Red light flashing)



# HEAVY DUTY PAPER SHREDDERS

## TG-210M (10 SHEETS)

Sheets -----10  
Credit Card --1



**Micro Cut**



**MICRO  
CUT**

Shred Type	Micro cut
Shred size(mm)	4 x 10mm
Shredding capacity(80 gsm)	10 sheets
Shreds	Paper/Credit card
Rated speed	2.0m/min.
Basket Capacity	21L
Noise Level (dB)	72 dB
Unit Dimension (mm)	362 x 195 x 452mm
Unit Weight (kgs)	5.5 kgs

# SPIRAL BINDING MACHINES



## A15 I-BIND - COMB (20% Effortless)

Max. Paper Size	A4, Letter size
Punching Capacity (80gsm)	15 Sheets
Max. Comb Size	51mm
Punching Margin Control	2-5mm
Dimensions	365 x 280 x 165mm
Net Weight(Kg)	3.4

## A20 I-BIND - COMB (20% Effortless)

Max. Paper Size	A4, Letter size
Punching Capacity (80gsm)	20 Sheets
Max. Comb Size	51mm
Punching Margin Control	2-5mm
Dimensions	370x 330 x 180mm
Net Weight(Kg)	4.6



## X5 Metal Body 20 Sheets 2in1 (Comb & Wire)

Max. Punching Capacity, Paper	20 sheets (80 gsm / 20 lbs)
Punching Margin Control (For Comb Only)	2mm-6mm(3/32"-1/4")
Binding Capacity, Comb	Max comb size: 51mm(2") for 450 sheets
Binding Capacity, Wire	Max wire size: 16mm(5/8") for 135 sheets
Max Paper Size	A4, Letter and extra large size
Punching Slots A4	A4 size: 21 for comb, 34 for wire
Punching Slots Letter Size	Letter size: 19 for comb, 32 for wire
Adjustable Paper Stop	Yes
Diemension	360x440x210 mm(14"x17"x8")
Net Weight	14.6kgs(32.12lbs)

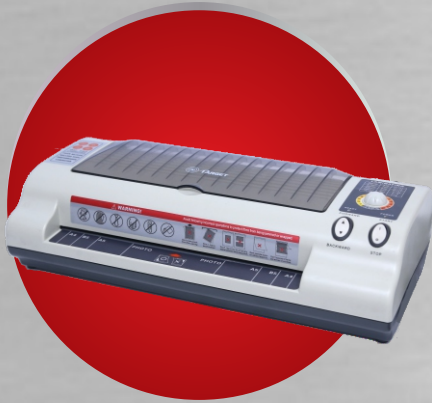


Wire      Comb



# LAMINATORS

FOUR SILICON ROLLERS HIGH PERFORMANCE LAMINATORS

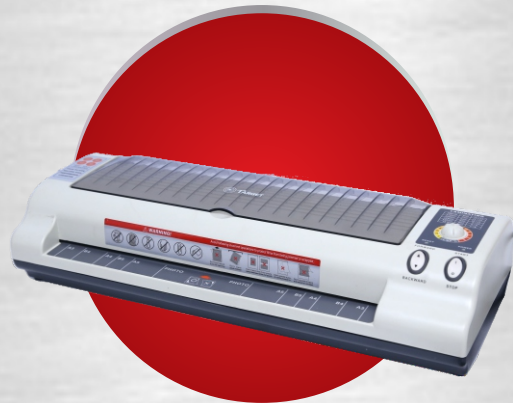


## A4 No. 242-1 SPECIFICATION

Rollers	4 Silicon Rollers
Voltage & Power	AC 220~ 240V.50/60 Hz.360W
Max. Width	A4/242mm
Laminating Speed	360mm/min
Pouch Thickness	75-200 micron
Ready Time	5-6 minutes
Dimension	363X168X102mm
Net Weight	2.8kg

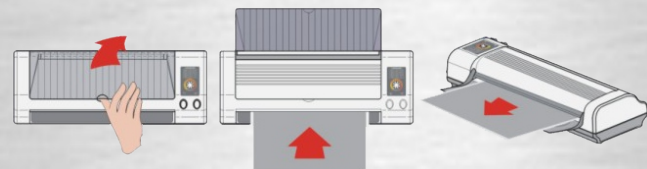
## A3 No. 332-1 SPECIFICATION

Rollers	4 Silicon Rollers
Voltage & Power	AC 220~ 240V.50/60 Hz.450W
Max. Width	A3/332mm
Laminating Speed	360mm/min
Pouch Thickness	75-200 micron
Ready Time	5-6 minutes
Dimension	450X168X102mm
Net Weight	3.4kg



### Temperature Adjustable Reverse/Heat/Cold Lamination

- Used to preserve your important documents and to protect them from dirt, water, etc. For laminating photos, printed copies, ID cards, licenses, certificates and other important documents.
- Temperature can be adjusted to laminate film pouch between 75mic to 200mic.
- Switch to normal temperature to laminate cold films.
- Reverse function: copies can be taken out at any point during lamination by using "Reverse" switch.
- Easy to operate, power failure proof and high temperature proof.
- An ideal machine with attractive design for home, office, school etc.



Open the paper slider, press the switch to "START" position, then swift the temperature controller to a suitable position according to thickness of the items being laminated and thickness of film pouch.

The "READY" green light indicator will be lit during health time. When the green light turns off the machine will be ready for laminating.

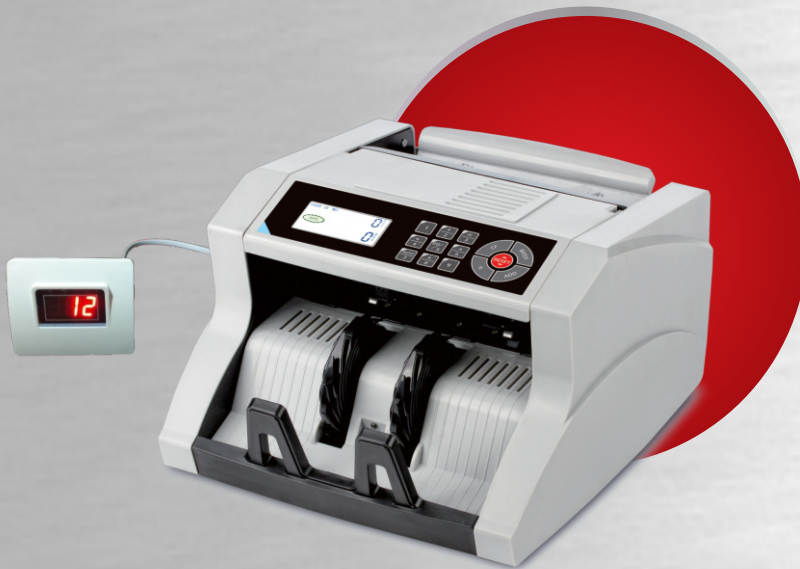
Insert the copy to be laminated into the front opening of the laminator, lamination is not finished until the pouch securely goes to the top of paper slider. After you finish laminating, press the switch to "STOP" position and pull out the plug.



# NOTE COUNTING MACHINE

## TG-100 UMD

Color Changing Lcd Display  
With Auto / Manual Function & External Display



### SPECIFICATION

Counting Speed:	≥1100pcs/min
Size of Countable Note:	50mm×100mm/80mm×190 mm
Banknotes thickness range:	0.075-0.15mm
Dimensions:	312mm×242mm×175mm
Net Weight:	4.8KGS (1pc)
Size of color box:	355mm×295mm×215mm
Gross Weight:	5.5KGS(1pc)
Power Supply:	AC 230V±10%, 50Hz±5%
Power Consumption:	≤70W
Hopper Capacity:	300pcs
Stacker Capacity:	200pcs